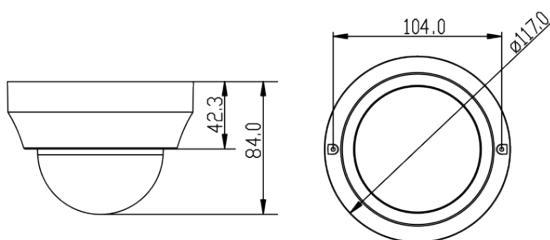


SE2 Indoor IR Dome

2MP dome with HDR and built-in IR, for indoor applications



For customers who have challenging lighting conditions and need a flexible field of view, the **SE2 Indoor IR Dome** from March Networks® integrates IR LEDs and High Dynamic Range (HDR) to deliver high-quality images in a variety of lighting conditions, from bright light to complete darkness. And the adjustable zoom and focus settings allow you to get the perfect field of view.



Key Benefits

- ▼ **High Dynamic Range (HDR).** The camera blends the best parts of several separate exposures together to combine the most focused, well-lit, and colorful parts of the scene.
- ▼ **Integrated Smart IR.** The built-in LEDs provide uniform illumination in total darkness, which means users will see high-quality, low-noise video from 100 feet away. Additionally, the camera automatically adjusts the intensity of the IR LEDs to compensate for the distance of an object, so the object is not overexposed when it gets too close to the camera.
- ▼ **Save money on storage and bandwidth.** The camera's low bit rate (LBR) setting reduces storage and bandwidth usage by 50% or more in most applications; streams can drop below 1Mbps at 2MP (15 fps).
- ▼ **Image is always in focus.** The camera can focus automatically based on zoom position, allowing it to remain in constant focus.
- ▼ **Remote zoom and focus.** No need to manually zoom and focus from the top of a ladder. Installers can zoom in and out remotely with the click of a mouse.
- ▼ **Hallway mode.** To capture vertically-oriented scenes, such as hallways and corridors, the camera provides a 90° rotation so images are created vertically, maximizing the field of view in narrow situations.
- ▼ **No need for pipe threader on-site.** The EMT mount is perfect for high ceiling drop installations; it allows the dome to be affixed directly to a pipe (e.g., PVC) without the need to thread the pipe.

Get 1080p video and a flexible field of view to capture high-quality images in challenging lighting conditions.

SE2 Indoor IR Dome

CAMERA	
Image Sensor	1/3" Progressive Scan CMOS
Effective Pixels	2MP; 1920 (H) x 1080 (V)
Lens	2.8-8mm, F1.6, varifocal
Horizontal Field of View	110° (Wide); 51° (Tele)
High Dynamic Range (HDR)	120dB
True Day/Night (TDN) Functionality	Removable cut filter and Smart IR LED
Minimum Illumination	Color: 0.1 lux; B/W: 0.01 lux; 0 lux with IR On
Shutter Speed	1/10000s
Camera Angle Adjustment	Pan 340°, Tilt 80°, Rotation -100° to 100°
Pat/Tilt/Zoom	Optical zoom, Digital PTZ via Command
White Balance	Manual/Automatic
IR Wavelength	850nm
IR Illumination Distance	100 feet (30m)
Number of LEDs	4










VIDEO	
Video Compression	H.264, M-JPEG
Resolution	2MP (1920 x 1080), SXGA, 720p, XGA, SVGA, D1, VGA, CIF
Frame Rate	Up to 30fps @ 2MP (1920x1080)
Video Streaming	Up to 4 individually configurable streams in H.264/M-JPEG Configurable resolution/frame rate/bandwidth; LBR/VBR/CBR in H.264
Dual Streams	H.264 2MP (1920 x 1080) @30fps + H.264 1080p @ 15fps (Shutter WDR Off)
Quad Streams	H.264 2MP (1920 x 1080) @30fps + H.264 1024x768 @30fps + H.264 352x240 @30fps + H.264 352x240 @30fps
HDR Mode (Shutter WDR)	H.264 1080p @15fps + H.264 1080p @15fps
Image Settings	Color, Brightness, Sharpness, Contrast, White Balance, Exposure Control, 2DNR, 3DNR, NR by Motion, Masking
Video Rotation	90° 9:16, 180° 16:9

AUDIO	
Audio Streaming	Two-way
Audio Compression	G.711 PCM
Audio Input/Output	Line in/line out

NETWORK	
Security	Password protection, HTTPS encryption (configuration only), IEEE 802.1X
Supported Protocols	IPv4/v6, TCP/IP, UDP, RTP, RTSP, HTTP, HTTPS, DHCP, PPPoE, UPnP, QoS, ONVIF-S
Interface	10/100Mbps Ethernet
Internet Browser	Internet Explorer (10+)

SYSTEM INTEGRATION	
Physical Alarm I/O	One alarm input, one relay output
Intelligent Video	Video motion detection, active video tampering, privacy zones
Alarm Trigger	Motion detection, video tampering, external input
Alarm Events	Video recording to local storage (SDXC, 64GB support), external output activation

GENERAL	
Construction	Metal base, plastic casing, polycarbonate bubble
Power	PoE IEEE802.3af, class 0
Power Consumption	2.6W typical; IR LED: +2.64W; SD Card: +0.6W
LED Indicator	Power, ACT
Connectors	Alarm in (1); Alarm out (1): Terminal Block Ethernet: RJ-45 Audio in: Terminal Block Audio out: Terminal Block
Local Storage	MicroSD/MicroSDHC/MicroSDXC memory card up to 64GB (sold separately)
Operating Conditions	-22° to 140°F (-30° to 60°C); 10-90% RH, non-condensing
Weight	0.91 lb (0.42 Kg)
Dimensions	Ø 4.6 x 3.3 H in (Ø 11.7 x 8.35 H cm)
Certification Model	C3401A
Regulatory Approvals	Emissions: EN 55032: FCC Part 15 Subpart B, ICES-003, CISPR 32, AS/NZS CISPR 32 Immunity: EN 50130-4, EN55024 Safety: CSA/UL60950-1, IEC60950-1 (CB report) Environmental: ROHS2, WEEE
Included Accessories	Quick Start Guide; mounting template; mounting hardware

MOUNTING OPTIONS		
 Surface Mount (out-of-box)	 Wall Mount	 0.75" EMT Mount Adaptor
 1.5" NPT Wall Mount	 Corner Adaptor	 Pole Adaptor
 Electrical Plate Adaptor	 1.5" NPT Pendant Mount	 1.5" NPT Mount Adaptor

ORDERING INFORMATION	
CAMERA	
35835-101	SE2 Indoor IR Dome
ACCESSORIES	
33286	Wall Mount
36158	0.75" EMT Mount Adaptor
33287	1.5" NPT Mount Adaptor
HOMINIDOMESMA	1.5" NPT Pendant Mount
HOMINIDOMEWB	1.5" NPT Wall Mount
HOMINIDOMEPCA	Pole Adaptor
27639	Corner Adaptor
36068	Electrical Plate Adaptor
37271	SE2 Indoor IR Dome smoked bubble